

How to Configure Sophos Anti-Virus for Home Systems

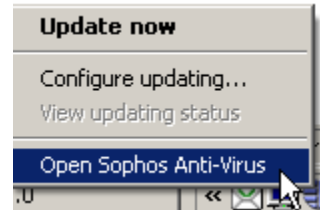
When you download and install Sophos on your home computer, on-access scanning is enabled, however the settings for scheduled scans and scanning for spyware are not configured. This gives you the freedom to set the program up to suit your schedule and needs.

This document gives step-by-step instructions for setting up full-system scans with recommended settings, as well as other configurations within the program such as scheduled scans.

Configure On-Access Scanning to Scan For Sypware

Sophos is pre-configured for on-access scanning. This means the program will check each file you access to ensure it is not infected. By default, on-access scanning is set up to check for viruses, but not for spyware or adware. To set Sophos up to scan for spyware through on-access scanning, and to set other on-access options:

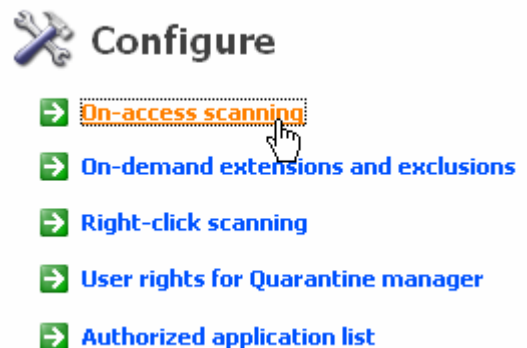
1. Right-click on the Sophos shield in the taskbar. A menu will appear. Click on "Open Sophos Anti-Virus".



2. When the Sophos Anti-Virus program opens, select "Configure Sophos Anti-Virus".



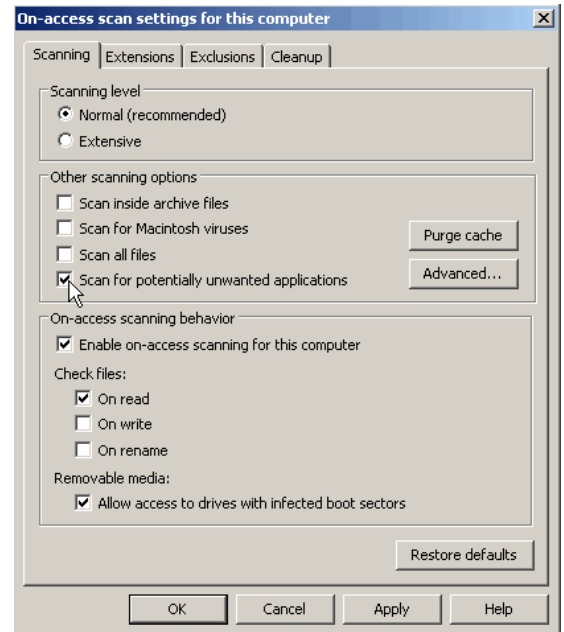
3. Select "On-Access Scanning".



4. For optimal performance, the following should be selected under the Scanning tab:

- Scanning level: Normal
- Other scanning options: Scan for potentially unwanted applications (this will scan for spyware)
- On-access scanning behavior: Enable on-access scanning for this computer
- Check files: On read
- Removable media: Allow access to drives with infected boot sectors

Settings under the Extensions and Exclusions Tabs are set for optimal performance and it is recommended that these settings be left as they are.

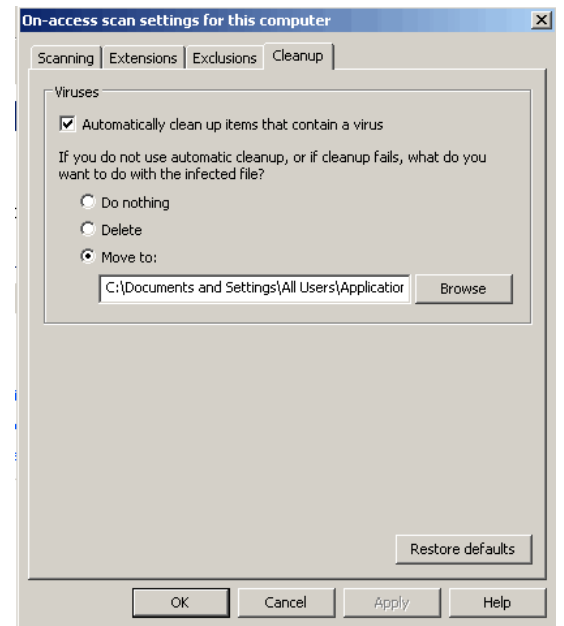


5. Click on the Cleanup tab.

Select:

- Automatically clean up items that contain a virus
- Move to: (leave the location as default. This will move files that were not cleaned to a folder located at the location specified)

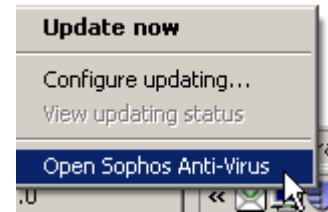
Click OK to return to the main screen.



The same steps described above can be used for "Right-click scanning". Right-click scanning allows you to run a quick scan on a file by right-clicking on the file name in My Computer or Windows Explorer. To configure Right-click scanning, select it from the configuration list (see step 2 above).

Set up a full system scan:

1. Right-click on the Sophos shield in the taskbar. A menu will appear. Click on "Open Sophos Anti-Virus".

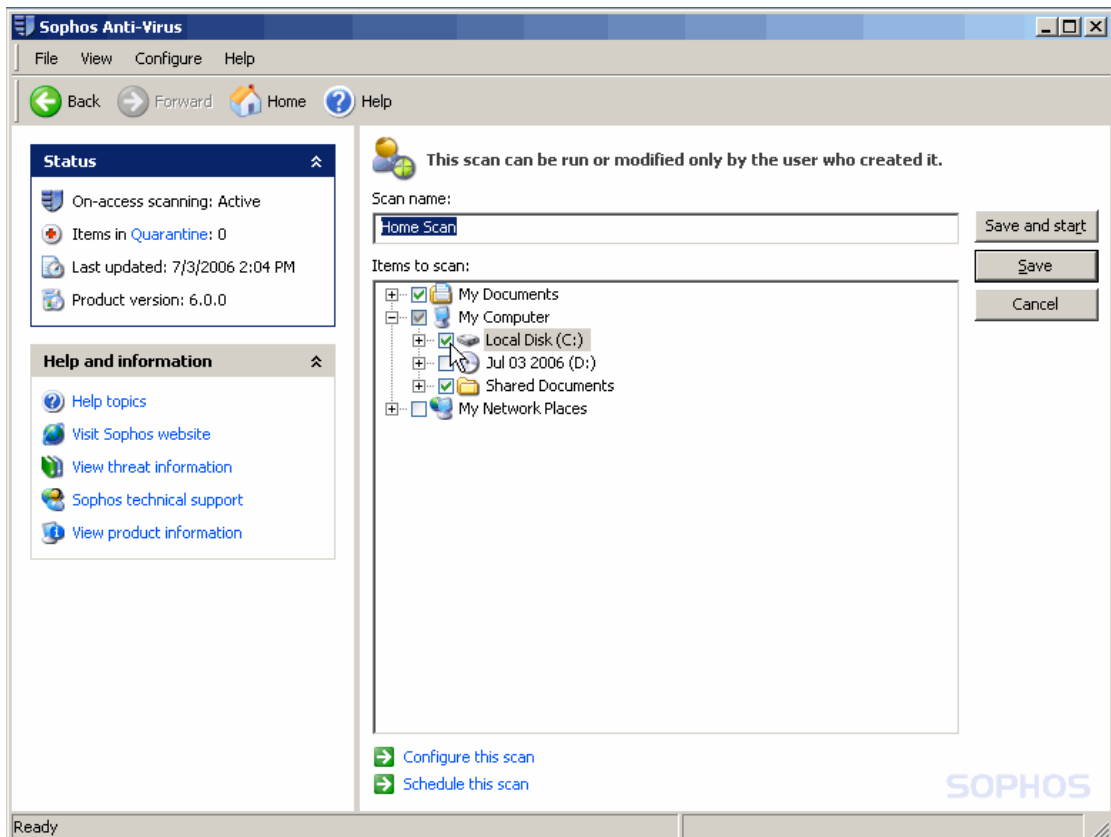


2. When the Sophos Anti-Virus program opens, select "Set up a new scan".



3. In this section, give the scan a name such as "Home Scan" and select the drives you would like to have scanned. In most cases, this will be the C:\ drive. Selecting this drive will automatically select your "My Documents" folder and all items on your desktop.

If you have a second hard drive on your system, you may choose to scan it as well. Simply select it and it will be included in the scan.

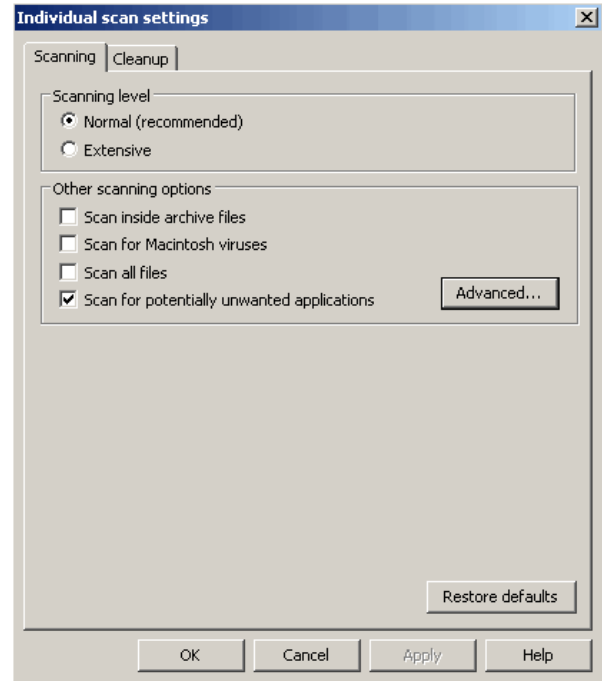


Once you have selected the drives for scanning, click "Configure this scan" at the bottom of the window.

4. This dialog box will allow you to specify settings for the scan.

For optimal performance, the following should be selected under the Scanning tab:

- Scanning level: Normal
- Other scanning options: Scan for potentially unwanted applications

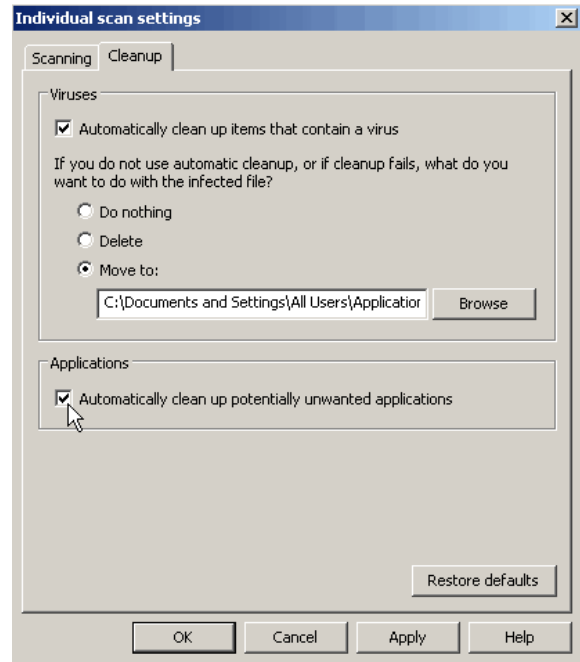


5. Click the Cleanup tab. The settings should be set as follows:

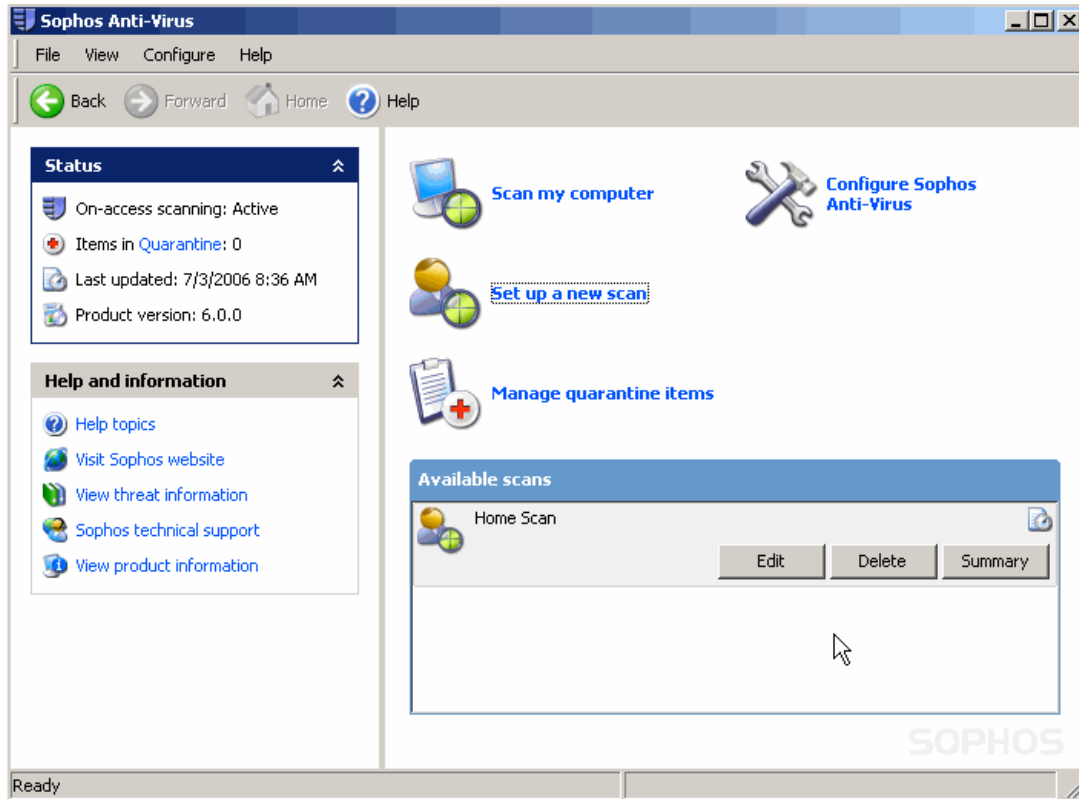
Select:

- Automatically clean up items that contain a virus
- Move to: (leave the location as default. This will move files that were not cleaned to a folder located at the location specified)
- Automatically clean up potentially unwanted applications (this will clean spyware and adware from your system)

Click OK to return to the main screen.



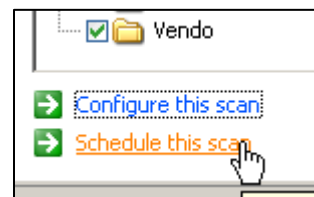
6. You'll now see your scan set up under "Available scans". To run a full system scan on demand, click "Scan my computer", keeping in mind that a scheduled scan can take 45 minutes to two hours, depending on your system. *A full system scan at the time of installation is recommended, so Sophos can clean any viruses or spyware currently on your computer.*



7. If you would like to set up a regularly scheduled scan, click the Edit button for your Home Scan.



8. Next, click "Schedule this scan". This will open the scheduler dialog box.

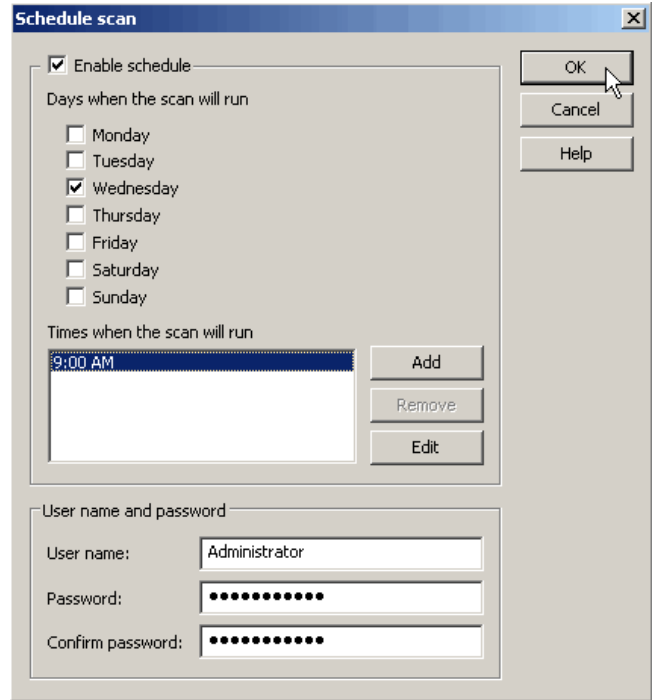


9. Select "Enable schedule" to make the schedule accessible.

Select a day and time to run a scheduled scan, keeping in mind that a scheduled scan can take 45 minutes to two hours, depending on your system. It is best to schedule the scan to happen at a time you can have your computer turned on, but not be working on it.

You will need either the administrator password for your computer, or another username and password that is in the administrator's group on your computer.

Once you've entered all of the necessary information, click OK to return to the main screen.



10. Click the "Save" button. This will return you to the Sophos Anti-Virus console, where you'll see your scheduled scan listed in the "Available scans" area. Changes to the scheduled scan can be made anytime by clicking the "Edit" button.

