

THE ART OF PLANETARY SCIENCE

JAMIE MOLARO & JAMES KEANE
 jmolaro@lpl.arizona.edu jkeane@lpl.arizona.edu

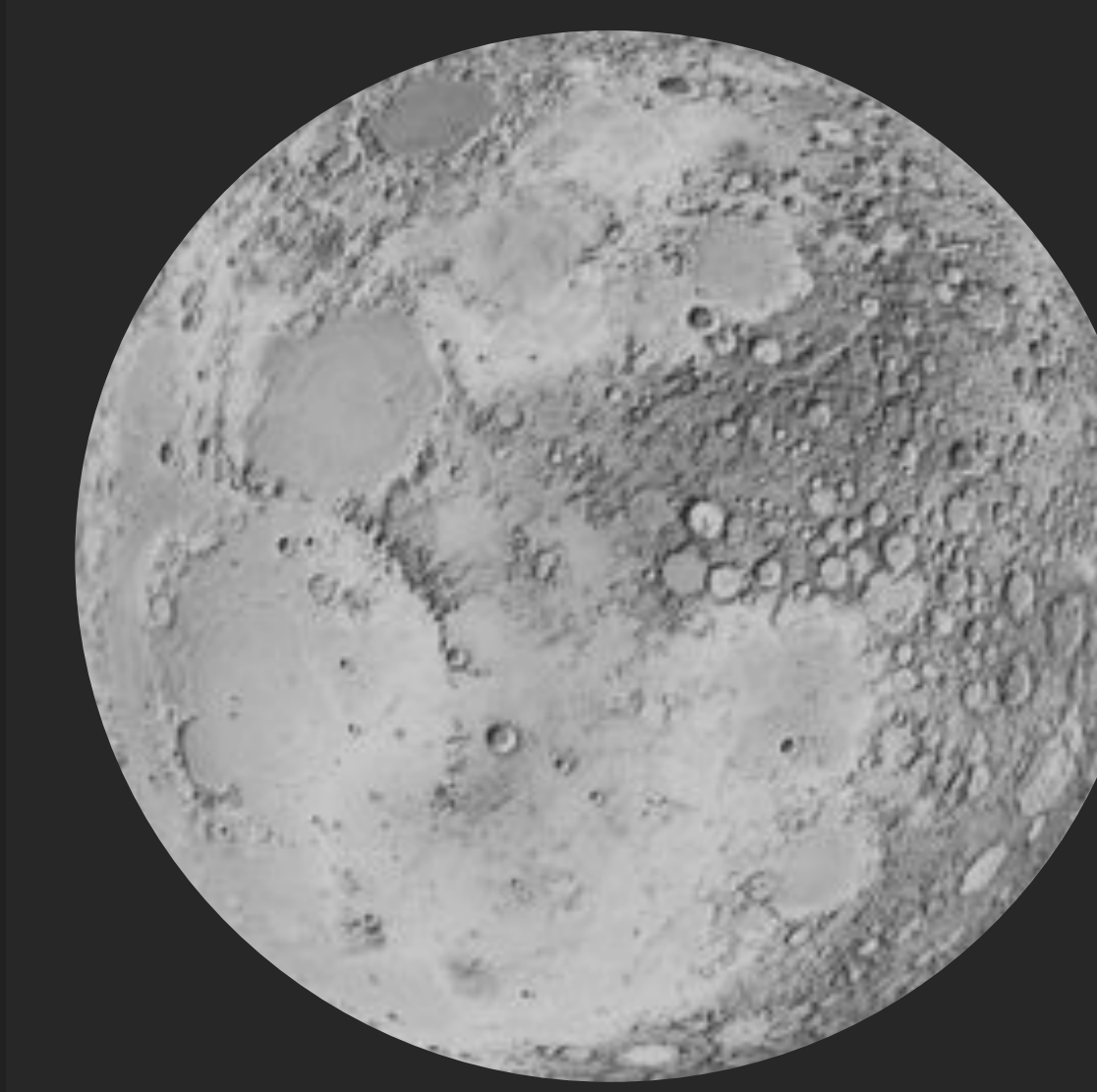
DEPARTMENT OF PLANETARY SCIENCE - LUNAR AND PLANETARY LABORATORY - UNIVERSITY OF ARIZONA



ART



IMAGES



DATA

An exhibition of art, created from and inspired by the scientific data that we use to explore the solar system

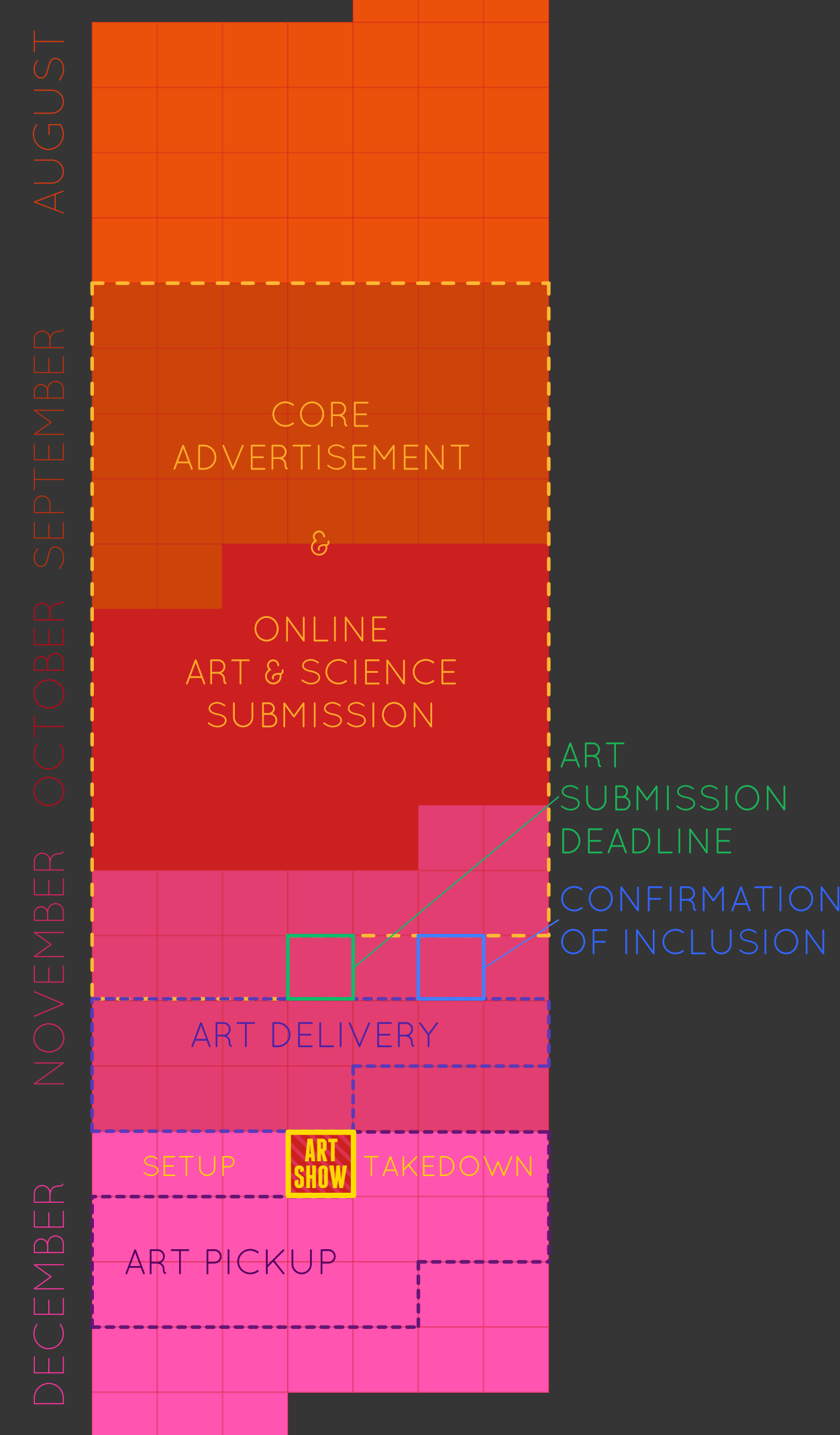
INTRODUCTION

On December 4th, 2013, the University of Arizona's Lunar and Planetary Laboratory (LPL) presented The Art of Planetary Science: An Exhibition (TAPS). This was a one night art exhibition and competition displaying works of art inspired by planetary science, alongside works created from scientific data. The goal of this event was to build community between the local art and science communities of Tucson, and to engage the public together in a celebration of the beauty and elegance of the universe.

Part of the purpose of the event was to present a different side of science to the public. The public often sees science as dull, boring, and clinical. In reality, however, science is full of beauty and elegance, and the practice of creating scientific knowledge requires an enormous amount of creativity. The event provided scientists the opportunity to show this to the public, by creating art out of science and their scientific data. These works utilized, for example, equations, simulations, visual representations of spacecraft data and a scientific concepts, and images of extra-terrestrial rock and dust samples. Viewing these works of art alongside more traditional artwork inspired by those same scientific ideas provided the audience with a more complex, multifaceted view of the content that would not be possible viewing either alone.

EVENT ORGANIZATION

EVENT SCHEDULE



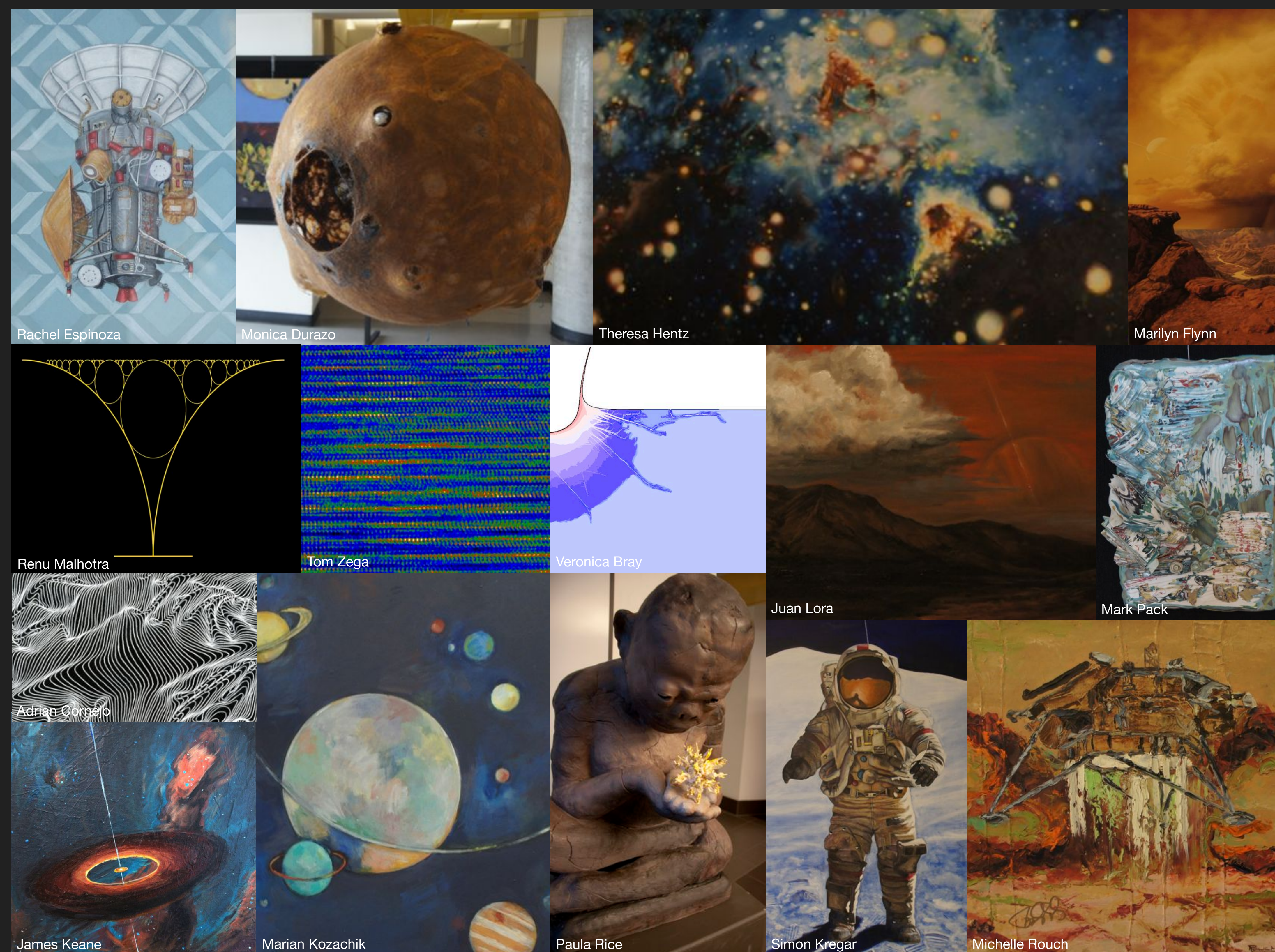
TAPS TEAM STRUCTURE: The event was conceptualized and organized by two LPL Ph.D. candidates as a voluntary EPO project, and was successful with the help of a staff member from LPL's Space Imaging Center, and the volunteer support of other LPL graduate students.

CALL TO ARTISTS & SCIENTISTS: We began advertising the event to artists and scientists three months before the art show. This was accomplished by posting the call to artists in online calendars, local newspapers, and sending it to email listservs used by local artists. Flyers were posted in local art stores, bookstores, coffee shops, art galleries, and museums (many of whom also donated prizes for the art competition). The event was also heavily promoted to the University of Arizona.

ACQUIRING & DISPLAYING THE ART: A website for the event was set up with an online submission form for interested artists and scientists to submit work for consideration, free of charge. LPL was able to accommodate accepting all submitted artwork. Once physically received, the TAPS team arranged and hung the art throughout the LPL building using display boards and easels owned by LPL and other UA departments.

TARGET AUDIENCE: In contrast to most EPO events, this event was specifically designed to reach out to adults in the community, and raise awareness about the value and importance of planetary science and astronomy to society. Additionally, the event was designed to reach out to the art community, a group of people that is often less aware of, or interested in, the sciences.

TAPS PARTNERSHIPS: The TAPS team was able to collaborate with the Tucson Museum of Art (TMA), and a local brewers organization, Craft Tucson, on their event: *Art on Tap: Art, Music, and Beer Fest*. The winners of the TAPS competition and select works were featured at *Art on Tap*, which took place three days after TAPS. This provided LPL and the TMA a unique opportunity to work together to engage the public in art and science, and provide artists with more than one opportunity to display their work.



Rachel Espinoza

Monica Durazo

Theresa Hentz

Marilyn Flynn

Renu Malhotra

Tom Zega

Veronica Bray

Mark Pack

James Keane

Marian Kozachik

Paula Rice

Juan Lora

Simon Kregar

Michelle Rouch



EVENT RECEPTION

The inaugural exhibition was extremely successful – displaying over 150 works of art, from 70 artists and scientists, and drawing an audience of more than 300 art and science enthusiasts.

The response from the art community was overwhelmingly positive. Many artists expressed their enthusiasm for exploring planetary science and astronomy as a theme, getting the chance to interact with and meet scientists, and having an additional venue (and audience) in which to display their work. The scientists who participated were equally interested in seeing local art, meeting artists, and promoting the beauty of science.

FUTURE DEVELOPMENT

The success of the first ever TAPS exhibition has paved the way for future art and science collaboration and engagement.

LPL and the TAPS team are pleased to announce the second annual *The Art of Planetary Science: An Exhibition* – planned for Fall 2014. For more information, visit www.lpl.arizona.edu/art.