

BRATFEST XVIII

26 Oct 1996 • Hawthorne House • Tucson, AZ, USA

The American Gastronomical Society
Division of Planetary Sausages presents:

“Geochemical and Microfossil Evidence for Early Bratfest on Mars”

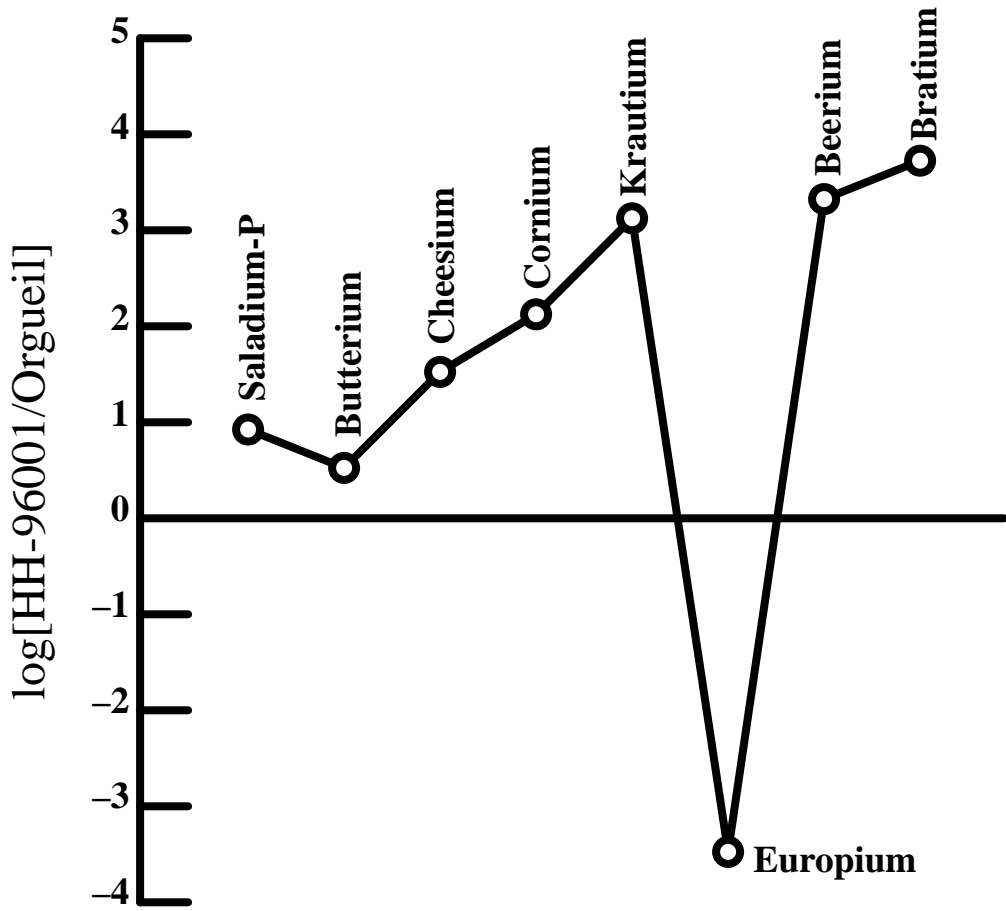


Fig. 1. Rare-food abundances for HH-96001 normalized to the CI carbonaceous chondrite Orgueil.

BRATFEST XVIII

[HTTP://WWW.LPL.ARIZONA.EDU/GRAD/BRATFEST/18/](http://www.lpl.arizona.edu/grad/bratfest/18/)

The American Gastronomical Society
Division of Planetary Sausages presents:

“Geochemical and Microfossil Evidence for Early Bratfest on Mars”

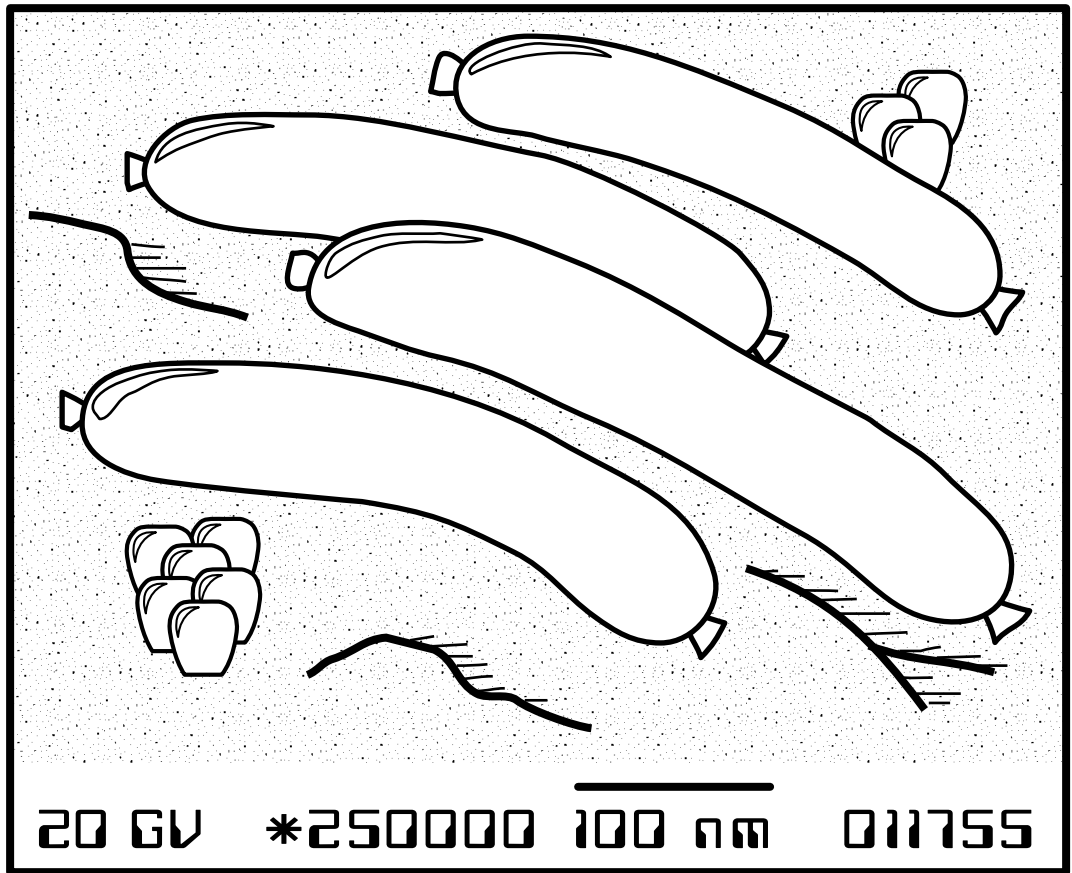


Fig. 2. Electron micrograph of putative Bratfest inclusion shows microfossil remnants of an early, prehistoric Martian Bratfest.